



an SKF Group brand



## Kaydon **infinite**<sup>®</sup> bearing solutions

### HS Slewing Ring Bearings

HS Series slewing ring bearings provide exceptional load and thrust capacity in a surprisingly small envelope. They are similar in size to Kaydon's popular RK series, but have a rectangular cross-section and less internal diametral clearance. This lets them handle about twice the moment load (up to 139,900 ft-lbs.).

HS Series bearings feature a 4-point contact design, deep groove gothic arch raceways and a maximum ball complement. They are available in sizes from 20" to 47" O.D. (500mm-1,200mm), with internal gearing, external gearing, or no gearing. All have integral seals to protect against contamination and two fittings for lubrication.

For more details and a comparison with the RK Series, please see the other side of this sheet.

#### Stocking Program

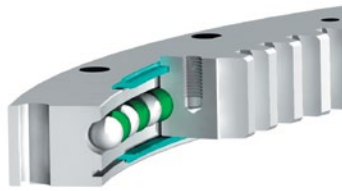
Kaydon stocks many HS Series bearings and all forgings, ready to be machined. Mating pinions (the same used in our RK Series) are also generally available.



Kaydon  
**infinite**<sup>®</sup>  
bearing  
solutions



# HS vs. RK: more capacity in the same space



HS Series



RK Series

The HS Series offers up to twice the static capacity of our RK Series in the same envelope. Although they use the same pinion, gear, and ring hardness, HS and RK bearings have different designs, clearance and mounting arrangements.

**External Configuration** - A rectangular cross-section provides more stiffness than the RK Series, which has an L-shaped cross-section with a mounting flange. The result is about twice the load capacity.

**Internal Configuration** - A deep-groove gothic arch raceway provides four points of contact with the balls, so that the bearing simultaneously supports radial, axial and moment

loads. The rectangular cross-section reduces distortion with better load distribution than the RK Series and allows lower internal clearance. These features, combined with maximum ball complement (from using spacers for ball separation), optimize bearing capacity.

**Gearing** - HS Series bearings can be ordered with internal gearing, external gearing or no gearing. The gears are Involute Stub designs with 20° pressure angles, manufactured to AGMA Class Q5, with .015" to .025" allowance for backlash. The HS is also an excellent alternative to an MT bearing when internal gearing is needed.

## No Gear

Kaydon P/N	OUTLINE DIMENSIONS AND WEIGHT		
	O.D.	I.D.	Approx. Weight
<b>HS6-16P1Z</b>	20.400	12.000	103
<b>HS6-21P1Z</b>	25.500	17.000	137
<b>HS6-25P1Z</b>	29.500	21.000	162
<b>HS6-29P1Z</b>	33.400	25.000	186
<b>HS6-33P1Z</b>	37.400	28.830	216
<b>HS6-37P1Z</b>	41.250	32.830	233
<b>HS6-43P1Z</b>	47.180	38.750	269

## Internal Gear

Kaydon P/N	OUTLINE DIMENSIONS AND WEIGHT		
	O.D.	I.D.	Approx. Weight
<b>HS6-16N1Z</b>	20.400	12.850	92
<b>HS6-21N1Z</b>	25.500	17.600	117
<b>HS6-25N1Z</b>	29.500	21.600	148
<b>HS6-29N1Z</b>	33.400	25.600	171
<b>HS6-33N1Z</b>	37.400	29.130	205
<b>HS6-37N1Z</b>	41.250	33.133	226
<b>HS6-43N1Z</b>	47.180	39.130	253

## External Gear

Kaydon P/N	OUTLINE DIMENSIONS AND WEIGHT		
	O.D.	I.D.	Approx. Weight
<b>HS6-16E1Z</b>	19.900	12.000	85
<b>HS6-21E1Z</b>	25.150	17.000	108
<b>HS6-25E1Z</b>	29.150	21.000	137
<b>HS6-29E1Z</b>	32.900	25.000	158
<b>HS6-33E1Z</b>	37.200	28.830	188
<b>HS6-37E1Z</b>	41.200	32.830	207
<b>HS6-43E1Z</b>	46.870	38.750	237

All HS bearings are 2.20" wide. For complete dimensional information, please refer to Catalog 390 on pages 53, 54 and 55.



**Kaydon Bearings**  
1500 Nagle Road  
Avon, Ohio 44011

440.871.2500 tel  
800.286.6274  
440.871.2503 fax

reman@kaydon.com  
www.kaydonbearings.com

**Kaydon Bearings**  
2860 McCracken Street  
Muskegon, Michigan 49441 U.S.A.

231.755.3741 tel  
800.514.3066  
231.759.4102 fax

bearings@kaydon.com  
www.kaydonbearings.com

